

Botany Evolution LLC

2510 Kirby Circle NE

Palm Bay, FL 32945

321-802-4583

Certificate Of Analysis

Sample Identification Information

Date of Analysis 5/10/2024

Sample: S2107

Product Name TRADITIONAL

Lot# VSSC2402-TR5

Country of Origin VANUATU

Country of Processing USA

Manufacture Date Feb-24

Best By Date Feb-27

General Product Specifications

Product Species Piper Methysticum

Part Used Root

Common Names Kava kava, Awa, Yagona

Appearance Yellow, Brown, beige powder

Analyzed Characteristics

Specification

Result

Test Method

Standardization

2-17% Kavalactones

7.94%

HPLC

Identification

Complies by HPLC

Conform

HPLC

Kavalactone Profile

Noble

PASS

HPLC

Mesh Size

60-30

60

Sieve

Color

Beige to Yellow

Pass

Visual

Odor

Pass

Organoleptic

Taste

Pass

Organoleptic

Chemotype

243561

HPLC

K/DHM

2.5

Calculation

Kavalactones	Code	Peaks Ref. (elution order)	Correction Factor	Area *	Area %	Corrected Kavalactones	Chemotype Identifier
Standard Kavain	K			2449			
Methysticin	M	1	2.21	505.325	6.98%	0.63%	6
Dihydromethysticin	DHM	2	3.38	460.237	6.36%	0.88%	5
Kavain	K	3	1	3952.21	54.62%	2.24%	4
Dihydrokavain	DHK	4	3.48	1216.689	16.81%	2.40%	2
Desmethoxyyangonin	DMY	5	2.52	434.317	6.00%	0.62%	1
Yangonin	Y	6	3.12	667.125	9.22%	1.18%	3
Kavalactones			Total:	7235.903	100.00%	7.94%	243561

*See data in attachment HPLC1100 Agilent Certificate with Chromatogram graph.

This result are in house tested and the best of our knowledge and experience. Using calibrated equipment.

We are dedicated to offer the best Quality of Botanical products on the market. We test and stand behind our products.

Disclaimer* the test results are accurate to the best of our knowledge and are based upon reputable laboratory and industry standard testing methods.

These results should not be used as a final determination for use in a finished product. It is recommended that you verify these test results with an in house quality control department or obtain an additional independent third party lab to verify that this material meets specifications

Botany Evolution, its board of directors, contract laboratories, employees, and affiliates are held harmless from any loss or damages resulting from the use or misuse of this document. The appropriate use of this product is the sole responsibility of the user of the purchasing party.

Chemist

Muste Young

Date

5/14/24

SAMPLE S2107
Vial 13

0.75637g/50mL

wavelength 246 nm

C:\CHEM32\1\DATA\KAVA_05_10_2024_15MINSTDTESTMETHODTEST 2024-05-10 16-50-0->

SEQUENCE C:\CHEM32\1\DATA\KAVA_05_10_2024_ ->

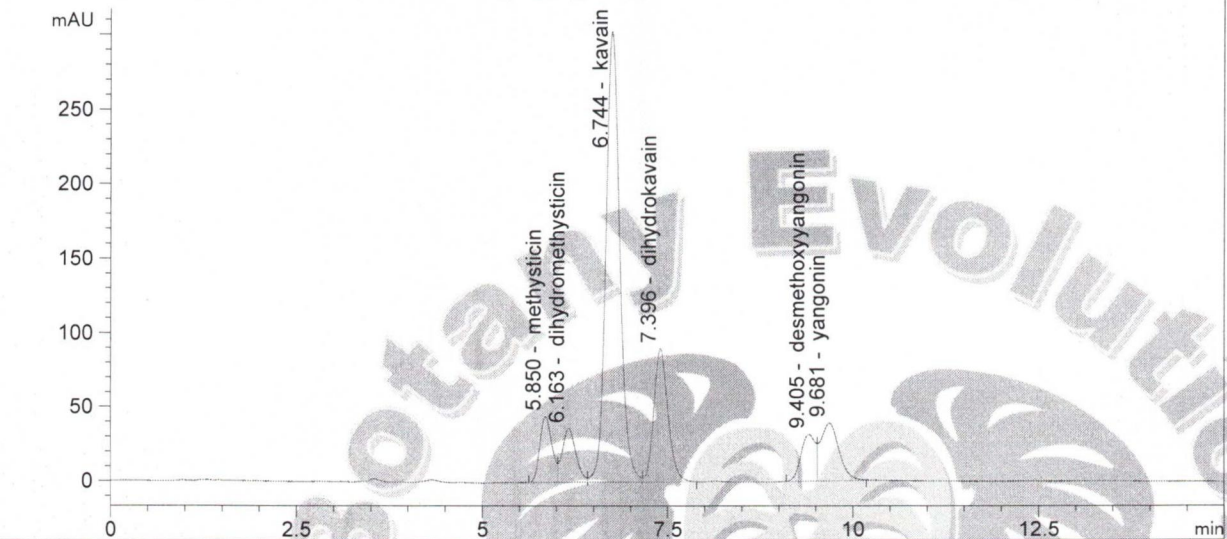
Injection date 5/10/2024

Injection time 9:25:03 PM

Acq. operator KRISTL

Method C:\CHEM32\1\DATA\KAVA_05_10_202->

DAD1 C, Sig=246,10 Ref=500,60 (KAVA_05_10_2024_15MINSTDTESTMETHODTEST 2024-05-10 16-50-05\013-14



#	COMPOUND	RET. TIME	AREA	AREA %	AMOUNT
1	methysticin	5.850	505.325	6.98	0.000
2	dihydromethysticin	6.163	460.237	6.36	0.000
3	kavain	6.744	3952.210	54.62	0.000
4	dihydrokavain	7.396	1216.689	16.81	0.000
5	desmethoxyyangonin	9.405	434.317	6.00	0.000
6	yangonin	9.681	667.125	9.22	0.000

5/14/24
S

CERTIFICATE OF ANALYSIS

GENERAL INFORMATION

Report Date	5/10/2024	Country of Origin	Vanuatu
Sample Number	S2107	Country of Processing	USA
Product Name	Traditional	Manufacture Date	Feb-24
Lot Number	VSSC2402-TR5	Best By Date	Feb-27

ITEM	SPECIFICATION	TEST RESULTS	METHOD
------	---------------	--------------	--------

PHYSICAL & CHEMICAL

Identification	Piper methysticum	Complies	HPLC
Appearance	Beige to Yellow Powder	Complies	Organoleptic
Kavalactone Standard	2-17 % Kavalactones	7.94%	HPLC
Kavalactone Profile	Noble	Pass	HPLC
Chemotype	If # 5 is in 1st or 2nd in Abundance	243561	HPLC
K/DHM	> 1.2 for Noble	2.5	Calculation

HEAVY METALS

		Basal	Lateral		
Arsenic (As)	NMT 1,000 (ppb)*	< 10	5.5	ppb	FDA EAM 4.7
Cadmium (Cd)	NMT 1,000 (ppb)*	145	176	ppb	FDA EAM 4.7
Lead (Pb)	NMT 1,000 (ppb)*	14.9	108	ppb	FDA EAM 4.7
Mercury (Hg)	NMT 1,000 (ppb)*	< 10	< 10	ppb	FDA EAM 4.7

*Heavy Metals Action Limits Based on Maximum PDE at 5% Kavalactones. Results May Exceed 1,000 ppb action limit with higher kavalactone contents.

MICROBIOLOGICAL

		Basal	Lateral		
AEROBIC PLATE COUNT	NMT 10,000,000 cfu	240	17,000	cfu / 10 g	USP 61
E. COLI	ABSENT (cfu/10g)	Absent		cfu / 10 g	USP 62
PSEUDOMONAS AERUGINOSA	ABSENT (cfu/10g)	Absent		cfu / 10 g	USP 62
SALMONELLA	ABSENT (cfu/10g)	Absent		cfu / 10 g	USP 62
STAPHYLOCOCCUS AUREUS	ABSENT (cfu/10g)	Absent		cfu / 10 g	USP 62
YEAST	NMT 100,000 cfu (Combined)	80	800	cfu / 10 g	USP 2021
MOLD		80	1,000	cfu / 10 g	
TOTAL YEAST & MOLD	NMT 100,000 cfu (Combined)	160	1,800	cfu / 10 g	

cfu/g = Colony Forming Units Per Gram NMT = No More Than PDE = Permitted Daily Exposure PPB = Parts Per Billion

Analysis Performed by a Third-Party Laboratory

We are dedicated to offer the best quality of botanical products on the market. We test and stand behind our products.

*Disclaimer * The test results are accurate to the best of our knowledge and are based upon reputable laboratory and industry standard testing methods.*

These results should not be used as a final determination for use in a finished product. It is recommended that you verify these test results with an in-house quality control department or obtain an additional independent third-party lab to verify that this material meets specifications.

Botany Evolution, its board of directors, contract laboratories, employees, and affiliates are held harmless from any loss or damages resulting from the use or misuse of this document. The appropriate use of this product is the sole responsibility of the user of the purchasing party.

Authorized By (Name / Title): Tommy Sabeh Manager Signature: Tommy Sabeh