

Botany Evolution LLC

2510 Kirby Circle NE

Palm Bay, FL 32945

321-802-4583

Certificate Of Analysis**Sample Identification Information**Date of Analysis 8/8/2023Sample: S1938Product Name GOLDLot# SIK2301-G7Country of Origin SOLOMON ISLANDSCountry of Processing USAManufacture Date Jan-23Best By Date Jan-26**General Product Specifications**Product Species Piper MethysticumPart Used RootCommon Names Kava kava, Awa, YagonaAppearance Yellow, Brown, beige powder**Analyzed Characteristics****Specification****Result****Test Method**Standardization

2-17% Kavalactones

9.83%

HPLC

Identification

Complies by HPLC

Conform

HPLC

Kavalactone Profile

Noble

PASS

HPLC

Mesh Size

60-30

60

Sieve

Color

Beige to Yellow

Pass

Visual

Odor

Pass

Organoleptic

Taste

Pass

Organoleptic

Chemotype

243516

HPLC

K/DHM

3.2

Calculation

Kavalactones	Code	Peaks Ref. (elution order)	Correction Factor	Area *	Area %	Corrected Kavalactones	Chemotype Identifier
Standard Kavain	K			2350.67			
Methysticin	M	1	2.21	418.627	5.02%	0.52%	6
Dihydromethysticin	DHM	2	3.38	457.605	5.48%	0.83%	5
Kavain	K	3	1	4674.961	56.02%	2.64%	4
Dihydrokavain	DHK	4	3.08	1641.417	19.67%	3.90%	2
Desmethoxyyangonin	DMY	5	2.52	461.041	5.52%	0.71%	1
Yangonin	Y	6	3.12	691.756	8.29%	1.23%	3
Kavalactones			Total:	8345.407	100.00%	9.83%	243516

*See data in attachment HPLC1100 Agilent Certificate with Chromatogram graph.

This result are in house tested and the best of our knowledge and experience. Using calibrated equipment.

We are dedicated to offer the best Quality of Botanical products on the market. We test and stand behind our products.

Disclaimer* the test results are accurate to the best of our knowledge and are based upon reputable laboratory and industry standard testing methods.

These results should not be used as a final determination for use in a finished product. It is recommended that you verify these test results with an

in house quality control department or obtain an additional independent third party lab to verify that this material meets specifications

Botany Evolution, its board of directors, contract laboratories, employees, and affiliates are held harmless from any loss or damages resulting from the

use or misuse of this document. The appropriate use of this product is the sole responsibility of the user of the purchasing party.

Chemist

Nustle Young

Date

8/9/23

SAMPLE S1938
Vial 13

0.75152g/50mL

wavelength 246 nm

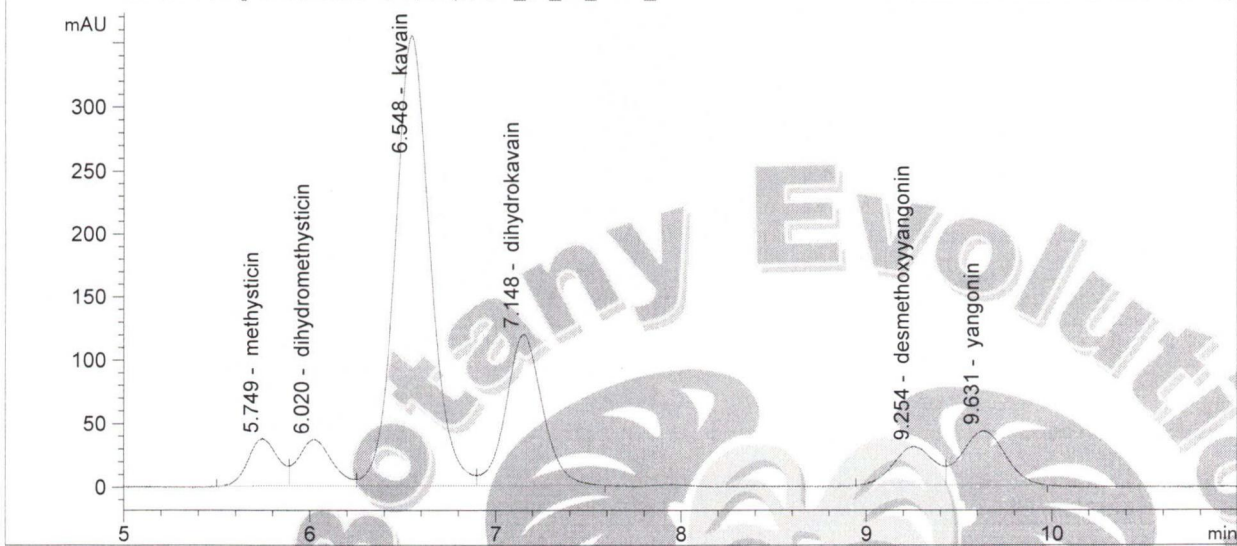
C:\CHEM32\1\DATA\KAVA_08_08_2023_15MINSTDTESTMETHOD 2023-08-08 15-43-27\01->
SEQUENCE C:\CHEM32\1\DATA\KAVA_08_08_2023_ ->

Injection date 8/8/2023
Injection time 8:02:37 PM

Acq. operator KRISTL

Method C:\CHEM32\1\DATA\KAVA_08_08_202->

DAD1 C, Sig=246,10 Ref=500.60 (KAVA_08_08_2023_15MINSTDTESTMETHOD 2023-08-08 15-43-27\013-1301.D)



#	COMPOUND	RET. TIME	AREA	AREA %	AMOUNT
1	methysticin	5.749	418.627	5.02	0.000
2	dihydromethysticin	6.020	457.605	5.48	0.000
3	kavain	6.548	4674.961	56.02	0.000
4	dihydrokavain	7.148	1641.417	19.67	0.000
5	desmethoxyyangonin	9.254	461.041	5.52	0.000
6	yangonin	9.631	691.756	8.29	0.000

8/9/23
S